

STANDTOP®

FOCUSING VEHICLE SAFETY

SINCE 2010

CE E24 FC
CATALOG

STANDTOP®



BSD Radar System



AI BSD System



Reversing Camera System



Standtop Technology Group Co.,Limited
Shenzhen Standtop Electronics Technology Co.,Ltd
Tel:+86-755-27322079
WhatsApp/Wechat:+86 13826556522
E-mail: sales@standtop.com
Https://www.standtop.com
Address: Room 408, building A,Kaihuimao industrial park, Liyuan road,
Fuhai,Baoan District, Shenzhen,518103,China



WhatsApp

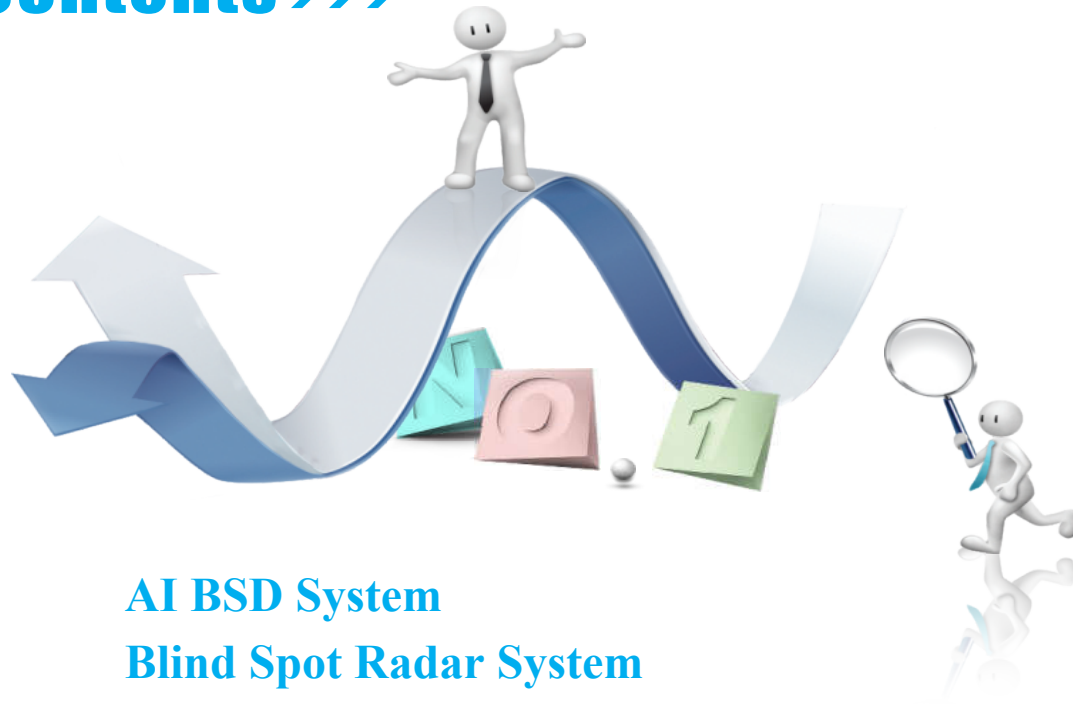


Wechat

Standtop Technology Group Co.,Limited

OEM & ODM

Contents >>>



- AI BSD System
- Blind Spot Radar System
- Waterproof Monitor
- Reversing Camera System
- Wireless Reversing Camera System
- AHD Rearview Monitor
- Mirror Monitor
- AHD Rear view Camera
- Starlight AHD Cameras
- IPC Camera
- Rear view CCD Camera
- Car Mini Reverse Camera
- Brake Light Camera
- Car Bracket
- Car Cable

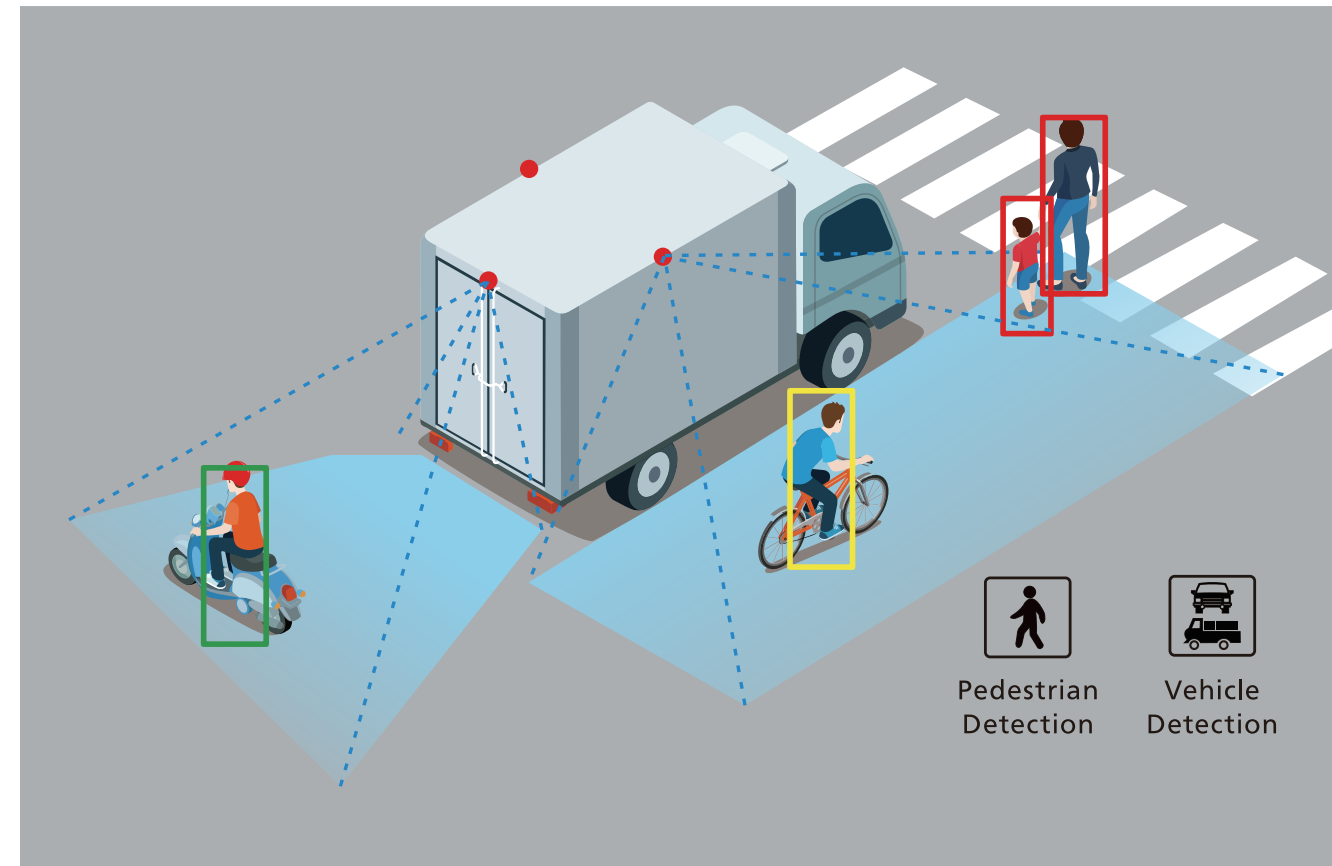
Improve Driving Safety With AI Technology

1080P AI BSD Camera

- Image sensor: 1/2.9" CMOS
- Detection distance: 0.2M-10M
- Viewing angle: 120 degree
- Power Voltage: DC 12V
- Starlight night vision
- Waterproof level: IP69K
- TV system: PAL/NTSC
- Video format: CVBS/AHD/TVI adjustable
- Connector: 4pin aviation
- AI alert sound via external buzzer
- Adjustment the detection zone and other functions via remote controller



ST-C05A-AI



When people or vehicles enter the set area around the vehicle while the vehicle is working, the AI camera can identify and present it on the monitor in real time, superimpose the personnel tracking and alarm identification frame, and send a real-time audio and video alarm to the driver to remind the driver to pay attention in time to avoid collision accidents.

1. Pedestrian or vehicle alert sounds directly from the display
2. The adjustment detection zone is done via monitor, also some other functions of AI camera, which can be adjusted via this monitor
3. The AI camera and monitor need to be used together



ST-722HD1-AI



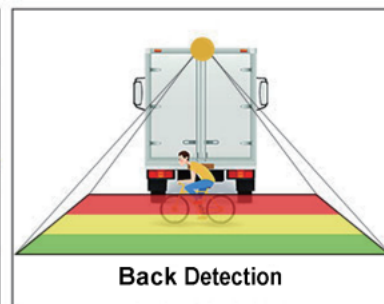
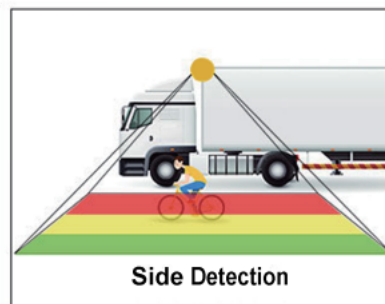
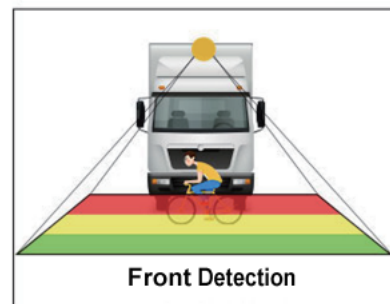
ST-722HD2-AI

AHD Heavy Duty Monitor

- Video format: AHD/CVBS
- Screen size: 7" IPS Color TFT LCD
- Resolution: 1024(W)*RGB*600(H)
- Display ratio: 16:9
- System: PAL/NTSC
- Voltage: DC 12-32V
- 3AV input, 2 trigger wires
- Connector: 4Pin aviation
- Operating Temperature: -30°C~70°C

1080P AI BSD Camera

- Detection distance: 0.2M-10M
- Image sensor: 1/2.9" CMOS
- Starlight night vision
- Viewing angle: 120Degree (ST-722HD1-AI)
- Viewing angle: 150Degree(H) (ST-722HD2-AI)
- Power Voltage: DC 12V
- Waterproof Level: IP69K



24Ghz Millimeter Wave Radar System

The Commercial Vehicles blind area early warning radar system is developed based on the millimeter wave sensor chip, which is highly intelligent, precise and precise ranging sensor module. The sensor adopts FMCW waveform, combined with radar processing, and has a built-in intelligent moving object sensing algorithm to detect the approaching state of moving targets in the early warning area monitor. And remind drivers and pedestrians through indoor and outdoor sound and light alarms and can trigger enlarged monitoring pictures at the same time.

24Ghz Millimeter Wave Blind Spot Radar System For Trucks/Cement mixer truck/ Dump truck/Construction Vehicles etc.



ST-PSS-007

1. 24Ghz millimeter wave Radar Control box
2. Adopt wide voltage power supply design, can support DC12-36V
3. Professional design of large host in blind area, better and more durable
4. Professional aviation connection line speed, waterproof, dustproof, more reliable
5. Interior Sound and Light Alarm, 4 modes alarm voice settings, alarm voice can be customized
6. External Sound and Light Alarm, Default is DaDaDa audio, alarm voice can be customized
7. Early warning area Length:12M Width:3M
8. Mainly application for Trucks/Cement mixer truck/Dump truck/Construction Vehicles etc.

24Ghz millimeter wave controller :



Interior Sound and Light Alarm:



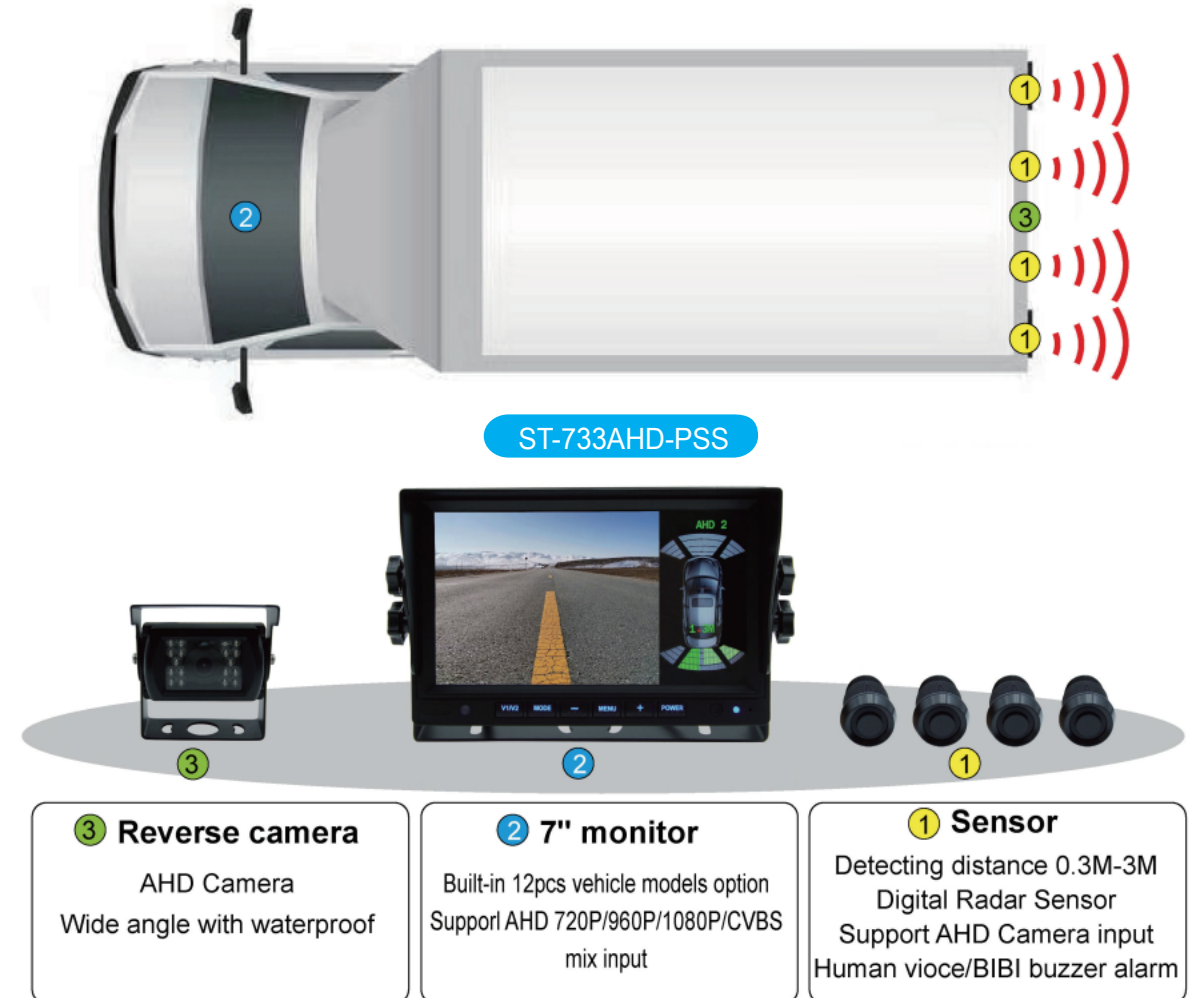
External Sound and Light Alarm:



ST-PSS-007

7Inch HD 1080P Digital Visual Reversing Radar System

This digital visual reversing radar system with Reverse Camera can get real vision the detection spot distance of driving and parking, help to avoid blind spots and secure driving and parking safety! Equipped with ultrasonic digital radar, without the need of radar host, it can directly display on the monitor the distance between the vehicle and the obstacle detected by the radar, strong anti-interference, special radar probe and equipped with a unique radar mounting bracket, high sensitivity, special connector, stable and good. professionally used for Commercial Vehicle Engineering Machinery Agricultural Vehicle Construction Vehicle etc.



Blind Spot Radar System

- 7" HD 1080P IPS panel, 12-32V wide voltage
- HD 1080P Backup camera
- 4pcs 28mm diameter digital radar sensor, also 8-16pcs sensor optional
- Alarm distance 0.4-3m parking distance 0.4-3m can be set
- 12 auto models choose types
- 3ways video input, 2ways trigger
- Human voice and BiBi buzzer alarm
- Display mode: Full and Down

ST-733AHD-PSS



ST-711WLC 7Inch 1080P Waterproof Camera System

It is a 7" IPS HD 1080P Waterproof camera system, monitor with IP67 waterproof rating, touch button, 12-24V wide voltage for different vehicle models, can be connect with 2pcs AHD cameras. Industrial vehicle camera in LED work light, with IP69K, 8pcs LED, 24W, 6000k LED color temperature, with its wide 150° angle view providing high resolution images, it is used to solve the problem of auxiliary lighting and video monitoring at night, ideal for reversing and monitoring of vehicles, this waterproof camera system apply for agricultural machinery, engineering vehicles, tractors, harvester trucks, excavators, cranes, forklift, boat etc.



Waterproof HD 1080P Camera system for agricultural machinery, engineering vehicles, tractors, harvester trucks, excavators, cranes, forklift, boat etc

ST-722WPM

7 inch HD 1080P Quad Waterproof Monitor
 Material of Casing: Metal
 Video format: AHD/CVBS
 Screen size: 7"IPS HD 1080P Screen
 Resolution: 1024 (W)*RGB*600(H)
 Display ratio: 16:9
 System: PAL/NTSC
 Voltage: DC 12-32V
 Waterproof Level: IP68
 Four Video AV input, 3 trigger wires
 Connector: 4Pin aviation



2CH optional



Optional Bracket A



Optional Bracket B

ST-744WPM

7inch HD 1080P Quad Waterproof Monitor
 Material of Casing: Plastic
 Video format: AHD/CVBS
 Screen size: 7"IPS HD 1080P Screen
 Resolution: 1024(W)*RGB*600(H)
 Display ratio: 16:9
 System: PAL/NTSC
 Voltage: DC 12-32V
 Waterproof Level: IP68
 Four Video AV input, 3 trigger wires
 Connector: 4Pin aviation



2CH optional



Optional Bracket

ST-101WPM

10.1inch HD 1080P Quad Waterproof Monitor
 Material of Casing: Metal
 Press button: Touch button
 Video format: AHD/CVBS
 Resolution: 1024(W)*RGB*600(H)
 Display ratio: 16:9
 System: PAL/NTSC
 Voltage: DC 9-36V
 Waterproof Level: IP69K
 Four Video AV input, 4 trigger wires
 Mount Bracket: U Shape or plate VESA are optional



2CH optional



Optional Bracket

ST-799AHD-S



Screen size: 7" IPS HD 1080P
 AHD and CVBS Signal Hybrid
 Resolution: 1024(W)*600(H)*RGB
 2 Channel input
 System: PAL&NTSC
 Certificate: CE & ECE R10
 Power Voltage: DC 9-36V

AHD 1080P Camera
 1/2.9" CMOS or AHD sensor
 Resolution: 1920*1080, 2Mpx
 Viewing Angle: 120 Degree
 Power supply: DC 12V
 Certificate: CE & ECE R10

ST-799RGS



Screen size: 7" IPS HD 1080P
 AHD and CVBS Signal Hybrid
 Resolution: 1024(W)*600(H)*RGB
 2 Channel input
 System: PAL&NTSC
 Certificate: CE & ECE R10
 Power Voltage: DC 9-36V

AHD 1080P Camera
 1/2.9" CMOS or AHD sensor
 Resolution: 1920*1080, 2Mpx
 Viewing Angle: 120 Degree
 Power supply: DC 12V
 Certificate: CE & ECE R10

ST-799BLC-S



Screen size: 7" IPS HD 1080P
 AHD and CVBS Signal Hybrid
 Resolution: 1024(W)*600(H)*RGB
 2 Channel input
 System: PAL&NTSC
 Certificate: CE & ECE R10
 Power Voltage: DC 9-36V

Brake Light Reversing Camera
 For MB Sprinter 2006-2018/VW Crafter
 2007-2016
 Image sensor: 1/3" CMOS
 Resolution: AHD 720P/1080P
 TV System: PAL/NTSC
 Viewing Angle: 120 Degree
 Power supply: DC 12V
 Waterproof Level: IP68
 IR Led: 6pcs

ST-799WRS-4



7" 1080P Wireless Rearview Monitor Kit with DVR
 2.4G Digital Wireless Monitor Specs:
 Screen size: 7" IPS AHD 1080P
 Resolution: 1024(W)*600(H)*RGB
 Screen ratio:16:9
 Power Supply: 9-36V
 Video Decode: H.264
 Up to 4 Wireless Cameras

Wireless Camera Specs:
 Image sensor:1/3" CMOS Sensor
 Resolution: AHD 1080P
 Effective Pixels: 1920(H) x 1080(V)
 Power supply: DC 12-24V
 Waterproof Level: IP68
 Night vision: Yes
 Transmission Distance: 200M(open area)

ST-788WRS



7" 1080P Wireless Mirror Monitor Kit with DVR
 2.4G Digital Wireless Monitor Specs:
 Screen size: 7" IPS AHD 1080P
 Resolution: 1024(W)*600(H)*RGB
 Screen ratio:16:9
 Power Supply: 9-36V
 Video Decode: H.264
 Up to 4 Wireless Cameras

Wireless Camera Specs:
 Image sensor:1/3" CMOS Sensor
 Resolution: AHD 1080P
 Effective Pixels: 1920(H) x 1080(V)
 Power supply: DC 12-24V
 Waterproof Level: IP68
 Night vision: Yes
 Transmission Distance: 200M(open area)

ST-799M



7" IPS HD 1080P Mirror Monitor
 Resolution:1024(W)*600(H)*RGB
 Video Format: AHD/CVBS Hybrid
 Power Voltage:DC 9-36V
 Video input: 2 Channels
 TV system: PAL/NTSC
 Screen ratio:16:9
 Connector: 4pin aviator or RCA
 Mounting method: Clip on or Mirror Stalk

ST-799Q



7" IPS HD 1080P Quad Mirror Monitor
 Resolution:1024(W)*600(H)*RGB
 Video Format: AHD/CVBS Hybrid
 Power Voltage:DC 9-36V
 Video input: 2 Channels
 Trigger: 4 trigger wires
 Video recording function: Optional
 TV system: PAL/NTSC
 Screen ratio:16:9
 Connector: 4pin aviator or RCA
 Mounting method: Clip on or Mirror Stalk

ST-533WRS



5" Wireless Magnetic Hitch Camera System
 2.4G Digital Wireless Monitor Specs:
 Screen size: 5" IPS AHD 1080P
 Resolution: 800(W)*480(H)*RGB
 Screen ratio:16:9
 Power Supply:DC 12V
 Up to 2 wireless cameras

Wireless Camera Specs:
 Image Sensor:1/2.7" CMOS Sensor
 Resolution: 1280(H)*720(V)
 Viewing Angle: 150°
 Power voltage: 5-12V
 Waterproof level: IP68
 Battery Capacity: 2800mA
 Transmission Distance: 164ft/50m in open area
 Working Time(IR on): 8h(6h)
 Charging time: 4h
 External DC power supply:5-24V
 Connector Type: USB

ST-522WRS



5" Wireless Magnetic Rechargeable Camera System
 2.4G Digital Waterproof Wireless Monitor Specs:
 Screen size: 5" IPS AHD 1080P
 Resolution: 800(W)*480(H)*RGB
 Screen ratio:16:9
 Power Supply:DC 12V
 built-in 2500mA battery, 8h working time
 Power supply: Type C connector, 5V
 Up to 2 wireless cameras

Wireless Camera Specs:
 Image Sensor:1/2.7" CMOS Sensor
 Resolution: 1280(H)*720(V)
 Viewing Angle: 140°
 Power voltage: 12-12V
 Waterproof level: IP6 8
 Battery Capacity: 6400mA
 Transmission Distance: 150M in open area
 Working Time(IR on): 8h(6h)
 Charging time: 4h
 External DC power supply:5-24V
 Connector Type: USB

ST-588TM-AHD



7inch IPS HD 1080P Mirror Monitor
 Resolution:1024(W)*600(H)*RGB
 Video Format: AHD/CVBS Hybrid
 Power Voltage:DC 9-36V
 Video input: 2 Channels
 TV system: PAL/NTSC
 Screen ratio:16:9
 Connector: 4pin aviator or RCA
 Certificate: CE & ECE R10

ST-588TM-HDS



7inch IPS HD 1080P OE Type Mirror Monitor
 Resolution:1024(W)*600(H)*RGB
 Video Format: AHD/CVBS Hybrid
 Power Voltage:DC 9-36V
 Video input: 2 Channels
 TV system: PAL/NTSC
 Screen ratio:16:9
 Connector: 4pin aviator or RCA
 Certificate: CE & ECE R10

ST-500M-AHD



5inch IPS HD Rearview Monitor
 Resolution:800(W)*480(H)*RGB
 Video Format: AHD/CVBS Hybrid
 Power Voltage:DC 12-24V
 Video input: 3 Channels
 TV system: PAL/NTSC
 Screen ratio:16:9
 Connector: 4pin aviator or RCA
 Certificate: CE & ECE R10

ST-799M-AHD



7inch IPS HD 1080P Rearview Monitor
 Resolution:1024(W)*600(H)*RGB
 Video Format: AHD/CVBS Hybrid
 Power Voltage:DC 9-36V
 Video input: 2 Channels
 TV system: PAL/NTSC
 Screen ratio:16:9
 Connector: 4pin aviator or RCA
 Certificate: CE & ECE R10

ST-7025M-AHD



Screen size: 7" IPS HD 1080P Screen
 Video format: AHD/CVBS
 Resolution: 1024(W)*RGB*600(H)
 Display ratio: 16:9
 System: PAL/NTSC
 Voltage:DC 12-32V
 3 AV input,2 trigger wires
 Connector: 4Pin aviation
 Operating Temperature: -30℃ ~ 70℃
 Mount Bracket: Oval dash mount bracket
 Horizontal and vertical screen options available

ST-7026VGA-AHD



7" IPS HD 1080P Monitor with VGA
 Video format: AHD/CVBS
 Resolution: 1024(W)*RGB*600(H)
 Display ratio: 16:9
 System: PAL/NTSC
 Voltage:DC 9-36V
 1 VGA input, 1 AV input,1 trigger wire
 Connector: 4Pin male+VGA or 4pin female+VGA optional
 Operating Temperature: -30℃ ~ 70℃
 Mount Bracket: U Shape or dash mount bracket optional

ST-799AHD-2P



7inch IPS HD 1080P 2 Split Monitor
 Resolution:1024(W)*600(H)*RGB
 Video Format: AHD/CVBS Hybrid
 Power Voltage:DC 9-36V
 Video input: 2 Channels
 TV system: PAL/NTSC
 Screen ratio:16:9
 Video record:optional,up to 256G SD card
 Connector: 4pin aviator or RCA
 Certificate: CE & ECE R10

ST-799Q-AHD



7inch IPS HD 1080P Quad Monitor
 Resolution:1024(W)*600(H)*RGB
 Video Format: AHD/CVBS Hybrid
 Power Voltage:DC 9-36V
 Video input: 4 Channels
 TV system: PAL/NTSC
 Screen ratio:16:9
 Video record:optional,up to 256G SD card
 Connector: 4pin aviator or RCA
 Certificate: CE & ECE R10

ST-722RVM



3CH 7 inch HD 1080P Rearview Monitor
 Video format: AHD/CVBS
 Screen size: 7" IPS Color TFT LCD
 Resolution: 1024(W)*RGB*600(H)
 Display ratio: 16:9
 System: PAL/NTSC
 Voltage: DC 12-32V
 Brightness: 600cd/m2
 3 Video AV input, AV2 for reversing
 Viewing angle: L/R 85/85 U/D 85/85
 Connector: 4Pin aviation

ST-101Q-AHD



10.1inch HD 1080P Quad Monitor
 Resolution:1024(W)*600(H)*RGB
 Video Format: AHD/CVBS Hybrid
 Power Voltage:DC 12-24V
 Video input:4 Channels
 TV system: PAL/NTSC
 Screen ratio:16:9
 Connector: 4pin aviator or RCA
 Certificate: CE & ECE R10

ST-C38A



Medium Size HD 1080P Dome Camera

- Image sensor: 1/2.9" CMOS
- Resolution: 1920(H) x 1080(V)
- Viewing angle: 150 Degree(H)
- IR leds: 5pcs
- Waterproof Level: IP68
- TV system: PAL/NTSC
- Power Voltage: DC 12V
- Connector: 4pin aviation

ST-C36A



Medium Size HD 1080P Side Camera

- Image sensor: 1/2.9" CMOS
- Resolution: 1920(H) x 1080(V)
- Viewing angle: 150 Degree(H)
- IR leds: 5pcs
- Waterproof Level: IP68
- TV system: PAL/NTSC
- Power Voltage: DC 12V
- Connector: 4pin aviation

ST-C37A



Medium Size HD 1080P Rear Camera

- Image sensor: 1/2.9" CMOS
- Resolution: 1920(H) x 1080(V)
- Viewing angle: 150 Degree(H)
- IR leds: 5pcs
- Waterproof Level: IP68
- TV system: PAL/NTSC
- Power Voltage: DC 12V
- Connector: 4pin aviation

ST-C114FVC



Medium Size Forward Facing Camera

- Image sensor: 1/2.9" CMOS
- Resolution: 1920(H) x 1080(V)
- Viewing angle: 95 Degree(H)
- TV system: PAL/NTSC
- Power Voltage: DC 12V
- WDR function: Optional
- Connector: 4pin aviation

ST-C04HDC



HD 1080P Medium Size Dome Camera

- Image sensor: 1/2.9" AHD GC2053
- Resolution: 1920(H) x 1080(V)
- Viewing angle: 120 Degree
- Power Voltage: DC 12V
- IR Leds: 12pcs
- Audio: optional
- Waterproof Rating: IP68

ST-C113FVC



HD 1080P WDR Forward Facing Camera

- Image sensor: 1/2.9" AHD GC2053
- Resolution: 1920(H) x 1080(V)
- Viewing angle: 120 Degree
- Power Voltage: DC 12V
- Waterproof Rating: IP67
- Connector: 4pin aviation

ST-845RC-EX



Heavy Duty Explosion Proof Camera

- Camera casing: Stainless steel
- Resolution: 1920(H) x 1080(V)
- Viewing angle: 120 Degree
- Power Voltage: DC 12V
- IR Leds: 4pcs 850Leds
- Waterproof Level: IP69K
- Connector: 4pin aviation

ST- C06A



•HD 1080P Side Camera

- Image sensor: 1/2.9" CMOS
- Resolution: 1920(H) x 1080(V)
- Viewing angle: 150 Degree
- TV system: PAL/NTSC
- Power Voltage: DC 12V
- WDR function: Optional
- Waterproof Level: IP68
- Connector: 4pin aviation

ST- C112A



HD 1080P Rear Camera

- Image sensor: 1/2.9" CMOS
- Resolution: 1920(H) x 1080(V)
- Viewing angle: 95 or 140 Degree(H)
- IR leds: 8pcs
- Waterproof Level: IP68
- TV system: PAL/NTSC
- Power Voltage: DC 12V
- Connector: 4pin aviation

ST-C03A



•Image sensor: 1/2.9" AHD GC2053

- Resolution: 1920(H) x 1080(V)
- Viewing angle: 120 Degree
- Power Voltage: DC 12V
- IR Leds: 10pcs
- Waterproof Rating: IP68
- Certificates: CE & ECE R10

ST-C03HDC



Medium Size Dome Camera

- Image sensor: 1/2.9" AHD GC2053
- Resolution: 1920(H) x 1080(V)
- Viewing angle: 120 Degree
- Power Voltage: DC 12V
- IR Leds: 10pcs
- Waterproof Rating: IP68

ST-C07A



HD 1080P Side View Ball Camera

- Image sensor: 1/2.9" AHD GC2053
- Resolution: 1920(H) x 1080(V)
- Viewing angle: 120 Degree
- Power voltage: DC 12V
- Night Vision,with mount bracket
- Waterproof Rating: IP68

ST-800A



- Image sensor: 1/2.9" AHD GC2053
- Resolution: 1920(H) x 1080(V)
- Viewing angle: 120 Degree
- Power Voltage: DC 12V
- IR Leds: 18pcs
- Waterproof Rating: IP68
- Certificates: CE & ECE R10

ST-TW-C09A



- HD 1080P Twin Lens Camera
- Image sensor: 1/2.9" AHD GC2053
 - Resolution: 1920(H) x 1080(V)
 - Viewing angle: 120 Degree
 - Power Voltage: DC 12V
 - IR Leds: 12pcs
 - Waterproof Rating: IP68
 - Certificates: CE & ECE R10

ST-C05A



- Image sensor: 1/2.9" AHD GC2053
- Resolution: 1920(H) x 1080(V)
- Viewing angle: 120 Degree
- Power Voltage: DC 12V
- IR Leds: 18pcs
- Waterproof Rating: IP68
- Certificates: CE & ECE R10

ST- C05A-S



- Starlight Sony AHD 1080P Camera
- Image sensor: 1/3" Sony IMX307
 - Resolution: 1920(H) x 1080(V)
 - Viewing angle: 120 Degree(H)
 - TV system: PAL/NTSC
 - Power Voltage: DC 12V
 - WDR function: Optional
 - Waterproof Level: IP68
 - Connector: 4pin aviation

ST-C22A



- Starlight Sony AHD 1080P Camera
- Image sensor: 1/3" Sony IMX307
 - Resolution: 1920(H) x 1080(V)
 - Viewing angle: 150 Degree(H)
 - TV system: PAL/NTSC
 - Power Voltage: DC 12V
 - WDR function: Optional
 - Waterproof Level: IP68
 - Connector: 4pin aviation

ST- C33A



- Starlight HD 1080P Camera
- Image sensor: 1/2.9" CMOS
 - Resolution: 1920(H) x 1080(V)
 - Viewing angle: 150 Degree(H)
 - TV system: PAL/NTSC
 - Power Voltage: DC 12V
 - Waterproof Level: IP68
 - Connector: 4pin aviation

ST-LPC-6

HD 1080P License Plate Camera

- Image sensor: 1/2.9" CMOS
- Resolution: 1920(H) x 1080(V)
- Viewing angle: 150 Degree(H)
- Power Voltage: DC 12V
- IR Leds: 5pcs
- Waterproof Rating: IP68



IPC Cameras

ST-WLC-8A



- HD 1080P Square Work Lamp Camera
- Image sensor: 1/2.9" AHD GC2053
 - Resolution: 1920(H) x 1080(V)
 - Viewing angle: 150 Degree(H)
 - Camera Power voltage: DC 12V
 - Work Lamp Power voltage: DC 12-24V
 - TV system: PAL/NTSC
 - LED color temperature/light: 6000K/60 degree flood light
 - IR Leds: 8pcs
 - Waterproof Rating: IP69K

ST-CMOS-8IR



- HD 1080P Round Work Lamp Camera
- Image sensor: 1/2.9" AHD GC2053
 - Resolution: 1920(H) x 1080(V)
 - Viewing angle: 120 Degree
 - Camera Power voltage: DC 12V
 - Work Lamp Power voltage: DC 12-24V
 - TV system: PAL/NTSC
 - LED color temperature: 3000K/4500K/6000K adjustable
 - Light: 60 degree flood light
 - IR Leds: 8pcs
 - Waterproof Rating: IP69K

ST-C04A



- Image sensor: 1/2.9" AHD GC2053
- Resolution: 1920(H) x 1080(V)
- Viewing angle: 120 Degree
- Power Voltage: DC 12V
- IR Leds: 10pcs
- Waterproof Rating: IP68
- Certificates: CE & ECE R10

ST-03HDC-IPC



- IPC Internal Dome Camera
- Image sensor: 1/3" CMOS
 - Resolution: AHD 1080P
 - Viewing angle: 80 Degree
 - Power Voltage: DC 12V
 - Waterproof Level: IP67
 - Night vision: 5M
 - Connector: 6pin aviation
 - Adopts high-definition solution with high color reproduction
 - Use high-definition network modules with standard ONVIF protocol, with strong compatibility
 - Can be equipped with audio, Person detection alarm (not equipped by default)
 - It designed for use with mobile DVR solutions

ST-C114-IPC



- IPC Front Windscreen Camera
- Image sensor: 1/3" CMOS
 - Resolution: AHD 1080P
 - Viewing angle: 80 Degree
 - Power Voltage: DC 12V
 - Waterproof Level: IP67
 - Night vision: 5M
 - Connector: 6pin aviation
 - Adopts high-definition solution with high color reproduction
 - Use high-definition network modules with standard ONVIF protocol, with strong compatibility
 - Can be equipped with audio, Person detection alarm (not equipped by default)
 - It designed for use with mobile DVR solutions

ST-C113-IPC



- IPC Forward Facing Camera
- Image sensor: 1/3" CMOS
 - Resolution: AHD 1080P
 - Viewing angle: 80 Degree
 - Power Voltage: DC 12V
 - Waterproof Level: IP67
 - Night vision: 5M
 - Connector: 6pin aviation
 - Adopts high-definition solution with high color reproduction
 - Use high-definition network modules with standard ONVIF protocol, with strong compatibility
 - Can be equipped with audio, Person detection alarm (not equipped by default)
 - It designed for use with mobile DVR solutions

Rear view CCD Cameras

ST-CCD-TF



- Image sensor: 1/3" Sony CCD sensor
- Resolution: 700TVL
- Viewing angle: 120 Degree
- Power Voltage: DC 12V
- IR Leds: 10pcs
- TV system: PAL/NTSC
- Waterproof Rating: IP68
- Certificates: CE & ECE R10

ST-CCD-800C



- Image sensor: 1/3" Sony CCD sensor
- Resolution: 700TVL
- Viewing angle: 120 Degree
- Power Voltage: DC 12V
- TV system: PAL/NTSC
- IR Leds: 18pcs
- Waterproof Rating: IP68
- Certificates: CE & ECE R10

ST-CCD-TS



- Image sensor: 1/3" Sony CCD sensor
- Resolution: 700TVL
- Viewing angle: 120 Degree
- Power Voltage: DC 12V
- TV system: PAL/NTSC
- IR Leds: 10pcs
- Waterproof Rating: IP68
- Certificates: CE & ECE R10

Brake Light Reversing Camera

ST-1722FD



- For FIAT Ducato 2014/Citroen Jumper/Peugeot Boxer
- Image sensor: 1/3" CMOS or CCD Sensor
 - AHD or CCD Optional
 - Resolution: AHD 1080P/700TVL
 - TV System: PAL/NTSC
 - Viewing Angle: 120 Degree
 - Power supply: DC 12V
 - Waterproof Level: IP68
 - IR Led: 6pcs
 - Built-in brake lamp
 - Connector: 4pin aviation or RCA
 - Operation Temperature: -20°C~70°C

ST-0615FD



LVDS optional



- For FIAT Ducato 2006-2015/Citroen Jumper/Peugeot Boxer
- Image sensor: 1/3" CMOS or CCD Sensor
 - AHD or CCD Optional
 - Resolution: AHD 1080P/700TVL
 - TV System: PAL/NTSC
 - Viewing Angle: 120 Degree
 - Power supply: DC 12V
 - Waterproof Level: IP68
 - IR Led: 6pcs
 - Built-in brake lamp
 - Connector: 4pin aviation or RCA
 - Operation Temperature: -20°C~70°C

ST-1766S



- Brake Light Reversing Camera For MB Sprinter 2006-2018/VW Crafter 2007-2016
- Image sensor: 1/3" CMOS or CCD Sensor
 - AHD or CCD Optional
 - Resolution: AHD 1080P/700TVL
 - TV System: PAL/NTSC
 - Viewing Angle: 120 Degree
 - Power supply: DC 12V
 - Waterproof Level: IP68
 - IR Led: 6pcs
 - Connector: 4pin aviation or RCA
 - Operation Temperature: -20°C~70°C

Car Mini Reverse Camera

ST-CMOS-669



- Image sensor: 1/4" CMOS sensor
- Resolution: 700TVL
- Viewing angle: 120 Degree
- Power Voltage: DC 12V
- Waterproof Rating: IP68
- Parking line on/off wires: optional
- Mirror on/off wires: optional
- Certificates: CE & ECE R10

ST-CMOS-778



- LVDS Camera for Fiat Ducato 8/Fiat Ducato 2021 For 7" Uconnect Monitor
- Image sensor: 1/3" H68 CMOS
 - Resolution: AHD 960P
 - Power supply: DC 12V
 - Viewing angle: 145 degree(H)
 - Waterproof level: IP68
 - Connector: Fakra
 - Extension cable: 6-15M optional
 - Certificates: CE & ECE R10

ST-CMOS-776



- Image sensor: 1/4" CMOS sensor
- Resolution: 600TVL
- Viewing angle: 120 Degree
- Power Voltage: DC 12V
- Waterproof Rating: IP68
- Parking line on/off wires: optional
- Mirror on/off wires: optional
- WDR function: optional
- Camera housing colors: Black or Silver
- Certificates: CE & ECE R10

Car Bracket

ST-590BR



ST-589BR



ST-591BR



ST-592BR



Car Cable

ST-FAK-C



Fakra Connector Cable
6M~15M Length optional
Female or Male optional

ST-15RCAMC



15M 4 pin male to RCA

ST-10MC



5M-20M Length optional

ST-801TL



Medium duty trailer link
20M+5M+Coiled cable